

Low Power Wireless Platform

Abicom International's "Freedom CPE-Lite" is a low power, high performance platform targeting embedded and mobile wireless applications, such as Machine to Machine sensor control, short range wireless CCTV and battery based applications.

The Freedom CPE lite offers a 2.4GHz 1x1 802.11n compliant radio delivering a maximum Link capability of 150Mbps, whilst supporting legacy 802.11b/g data rates.

Clients can choose to use proprietary Abicom/Qualcomm firmware, or to take advantage of the Open Source community projects such as OpenWRT and a software SDK will be made available to enable end users to develop applications within the OpenWRT framework.

Advanced features include:

- 20dBm output power
- dynamic clock switching for ultra-low power operation
- 400MHz Mips24K processor
- Integrated Antenna, with optional antenna socket
- 10/100 Fast Ethernet Port
- 2 Backplane Ethernet Ports
- USB2.0 with OTG support
- Li-Ion compatible Power Supply
- 2.5W Power consumption - full load
- 0.5W Idle (AP Function enabled)
- Small Form factor 54mmx69mm
- User configurable GPIO controls

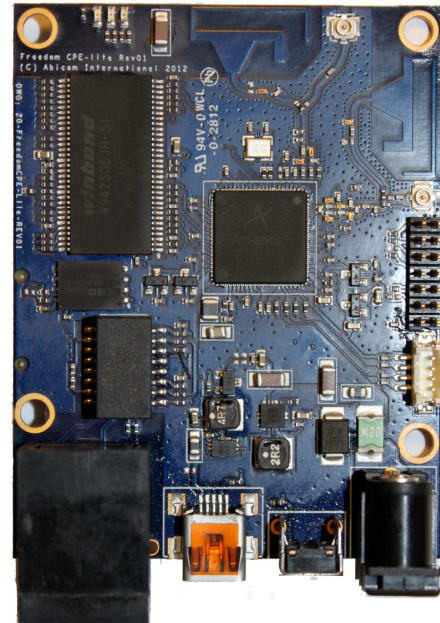
About Abicom: Abicom International Ltd. provides wireless engineering services and product development in all aspects of data communications.

Abicom has extensive experience in WLAN, WISP (Wireless ISP) and is an Atheros Authorised Design Center.

For more information, contact:

Dave Edwards at +44 (0) 1630-655933 (UK).

www.abicom.co.uk



Freedom CPE Lite Module

Technical Specifications

Frequency Range:	2300 – 2500 MHz b/g/n
Transmit Power:	Up to 20dBm in 1x1 g/n modes
Max Transmit data-rate:	150Mbit/sec 802.11n Mode
Operating Modes:	AP, WDS Repeater, Point to Multipoint FWA.
Security:	WEP, AES, TKIP, WPA and RADIUS.
Ethernet:	1x 10/100 FE Port 2x 10/100 Backplane Ethernet
USB:	1x USB2.0 interface with OTG
Serial Console:	via JTAG Header
Power:	1.8 – 6.0Vdc, 2.5W max
Dimensions:	54 x 69 mm